

Under the Blue Sky



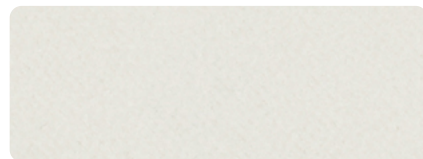
DOUGLASS
FABRICS



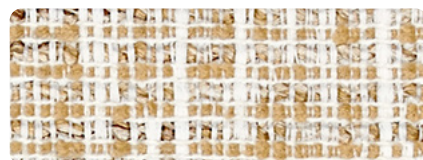
BAYOU
Beach



TRANQUIL
Shadow



RELAX
White Clouds



SERENE
Sand



RELAX
Sand Castle



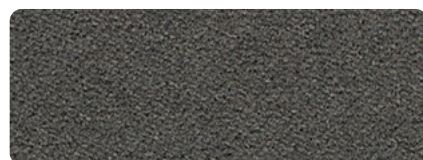
SERENE
Rock Cliffs



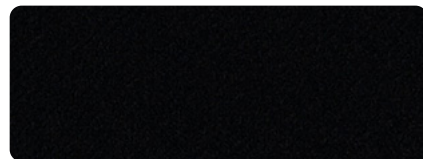
SERENE
Distant Haze



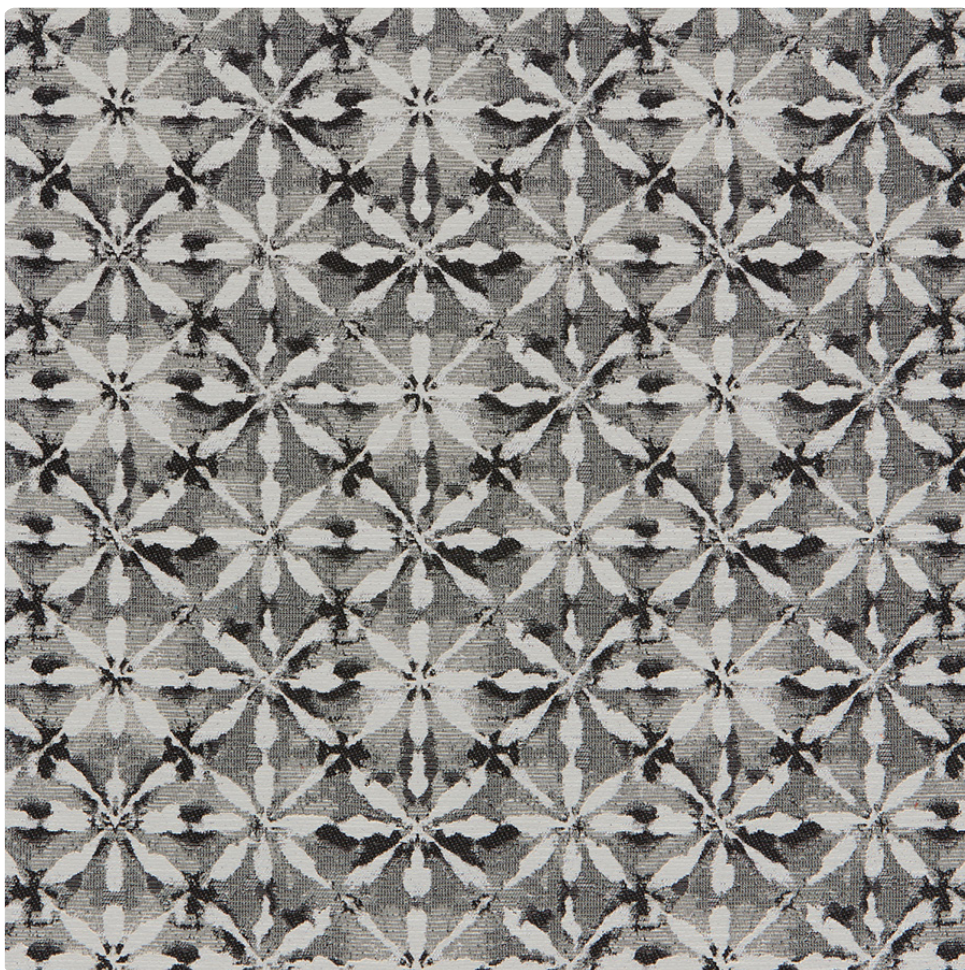
UNWIND
Dockside



RELAX
Late Night



RELAX
Eyes Closed



TRANQUIL

Photo for overall pattern effect only.

28 1/4" H X 17 3/4" V



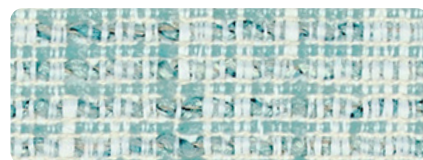
TRANQUIL
Waterfall



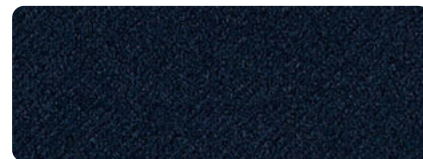
RELAX
Snow Angel



RELAX
Spa



SERENE
Blue Sky



RELAX
Midnight Breeze



TRANQUIL
Landscape



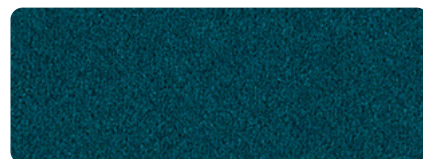
SERENE
Countryside



UNWIND
Mountain Air



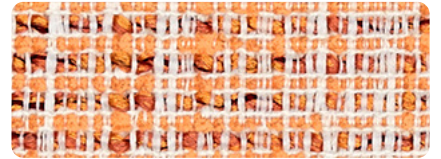
SERENE
Seaside



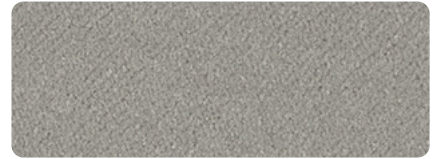
RELAX
Smooth Sailing



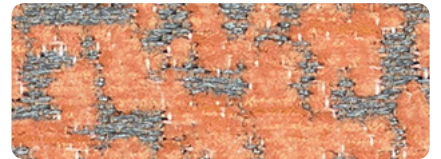
TRANQUIL
Sunrise



SERENE
Coral



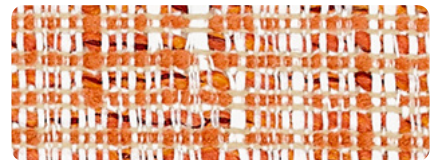
RELAX
Early Evening



UNWIND
Conch Shell



Canyon



SERENE
Sunset



RELAX
Happy Hour



SERENE
Waves



UNWIND
Under the Stars



TRANQUIL
Brick Patio

SPECIFICATIONS

Pattern	Content	Weight (per yard)	Repeat	Railroaded	Abrasion ASTM-D4157 (double rubs)	Colorfastness AATCC8 Test Method B	Lightfastness AATCC TM16	Seam Slippage ASTM-D4034	Tensile Strength ASTM-D5034	Tear Strength ASTM-D2261
Relax	100% High UV Polyester	16oz.	None	No	200,000	Wet-Class 4.5 Dry-Class 5	Class 4 1200 Hours	Warp-88 lbs. Fill-67 lbs.	Warp-237 lbs. Fill-187 lbs.	Warp-24 lbs. Fill-23 lbs.
Serene	59% High UV Polyester 41% High UV Olefin	16oz.	H- 14 1/2" V- 13 3/8"	No	63,000	Wet-Class 3 Dry-Class 4	Class 4 1200 Hours	Warp-60 lbs. Fill-54 lbs.	Warp-157 lbs. Fill-273 lbs.	Warp-27 lbs. Fill-37 lbs.
Tranquil	77% High UV Polyester 23% High UV Post Consumer Recycled Polyester	24oz.	H- 18 1/4" V- 17 3/4"	No	63,000	Wet-Class 3 Dry-Class 4	Class 4 1200 Hours	Warp-80 lbs. Fill-98 lbs.	Warp-170 lbs. Fill-350 lbs.	Warp-18 lbs. Fill-39 lbs.
Unwind	72% High UV Polyester 14% High UV Olefin 14% High UV Post Consumer Recycled Polyester	15oz.	H- 9 3/8" V- 10 1/4"	No	63,000	Wet-Class 3 Dry-Class 4	Class 4 1200 Hours	Warp-71 lbs. Fill-73 lbs.	Warp-171 lbs. Fill-271 lbs.	Warp-26 lbs. Fill-37 lbs.

FLAMMABILITY REQUIREMENTS

California 117-2013
 UFAC Class 1
 NFPA 260-1989 Class 1

All fabrics meet California Proposition 65 and are AB compliant.

GENERAL CLEANING METHODS

- Because dust and dirt buildup cause fabrics to wear faster, it is recommended to vacuum regularly with an upholstery attachment.
- Flip, rotate and fluff removable cushions regularly to ensure even wear and increase longevity.
- An annual professional cleaning will keep the upholstered furniture looking it's best.
- Maintenance requires promptly treating spots and stains which should include routine, ongoing care to reduce soil build-up on a fabric's surface.
- Excessive brushing and/or rubbing may create fuzzing.

Spot Cleaning with Soap and Water (for light to medium stains)

- 1) Before spot cleaning, blot up liquids on the surface with a clean, soft towel and brush off any loose dirt.
- 2) Prepare a cleaning solution of 1/4 teaspoon mild enzyme hand washing dish detergent with 1 cup lukewarm water.
For larger stains, double or triple the ingredients proportionally.
- 3) Apply the cleaning solution using a misting spray bottle.
- 4) Work the solution into the affected area by lightly cleaning the area with a sponge or soft bristle brush.
Make sure to work from the outside of the stain inwards so as not to spread the stain. Rinse the sponge or brush frequently.
- 5) Allow the cleaning solution to soak into the fabric.
- 6) Rinse thoroughly to remove all soap residues, as residues will attract dirt. Blot excess moisture with a clean, soft towel or sponge.
- 7) Repeat steps 3-6 as needed.
- 8) Allow fabric to air dry.

Spot Cleaning with Bleach (for stubborn or excessive stains)

- 1) Remove any loose debris and blot the stain.
- 2) Prepare a bleach based cleaning solution. Bleach should be diluted with water using a 1:4 ratio.
- 3) Apply the bleach-base cleaning solution using a misting spray bottle and allow for the solution to soak into the fabric.
- 4) Work the solution into the affected area by lightly cleaning the area with a sponge or soft bristle brush.
Make sure to work from the outside of the stain inward so as not to spread the stain. Rinse the sponge or brush frequently.
- 5) Blot and thoroughly rinse the fabric with water until the stain is cleaned. "Make sure that all of the bleach is rinsed off of the fabric."
Any bleach left on the fabric will assist in early degradation (shortening the lifespan) of the fabric.
- 6) Allow fabric to air dry.

MADE IN



U. S. A.

