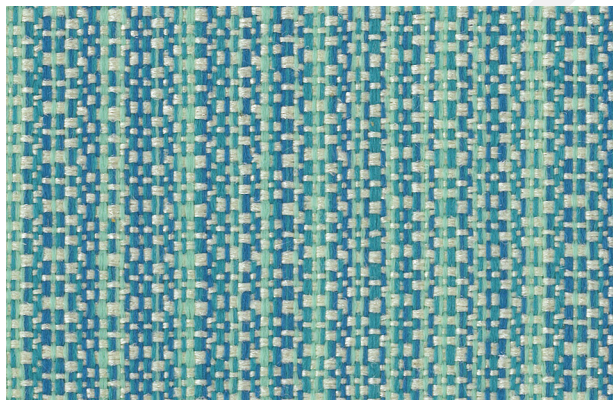


Rain or Shine Collection 5*

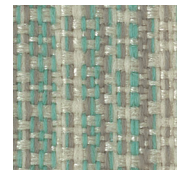
HIGH UV INDOOR/OUTDOOR UPHOLSTERY FABRIC



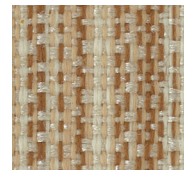
CABO
Blue Hawaii



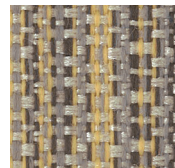
CABO
Poolside



CABO
Breeze



CABO
Rattan



CABO
Dolphin



CABO
Palmetto



CABO
Nautical Blue



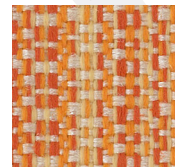
CABO
Patrón



CABO
Pebble



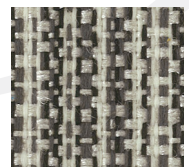
CABO
Aquarelle



CABO
Grapefruit



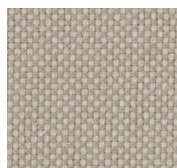
CABO
Coral



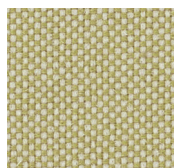
CABO
Black Sands



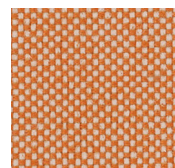
BIMINI
Sand Dollar



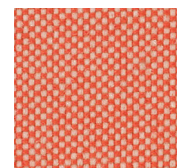
BIMINI
Pebble



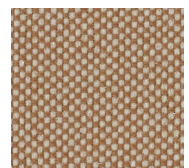
BIMINI
Palmetto



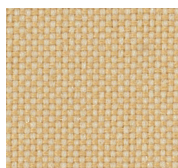
BIMINI
Papaya



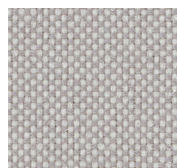
BIMINI
Coral



BIMINI
Rattan



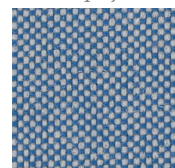
BIMINI
Tostada



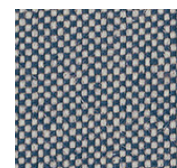
BIMINI
Dolphin



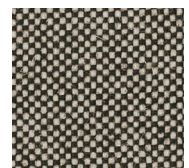
BIMINI
Aquarelle



BIMINI
Blue Hawaii



BIMINI
Nautical Blue



BIMINI
Black Sands



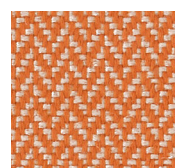
ZANZIBAR
Sand Dollar



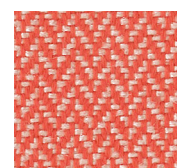
ZANZIBAR
Pebble



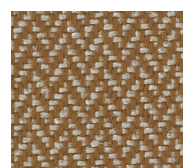
ZANZIBAR
Palmetto



ZANZIBAR
Papaya



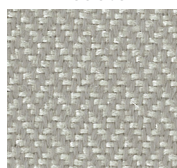
ZANZIBAR
Coral



ZANZIBAR
Rattan



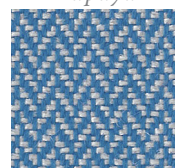
ZANZIBAR
Tostada



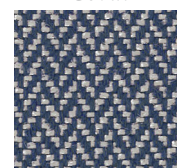
ZANZIBAR
Dolphin



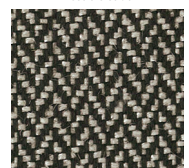
ZANZIBAR
Aquarelle



ZANZIBAR
Blue Hawaii



ZANZIBAR
Nautical Blue



ZANZIBAR
Black Sands

* Covered by a 5 year limited performance warranty.

Rain or Shine COLLECTION

5* Patterns are covered by a 5 year limited performance warranty. Contact your sales representative for written warranty terms and conditions.

TECHNICAL INFORMATION

A



Pattern/Direction Fabric width 54"	Fiber	Repeat	Backing & Finish	Weight (p/yard)	Abrasion ASTM 4157 (Double Rubs)	Lightfastness AATCC 16E	Colorfastness AATCC 8	Seam Slippage ASTM-D-4034
Bimini (Up the roll)	54% High UV Polyester 46% High UV Polyolefin	None	Outdoor Latex with Teflon®	11.1 oz.	125,000 (Cotton Duck)	1500 hours Class 4-4.5	Wet: Class 5 Dry: Class 5	Warp - 109 lbs Fill - 80 lbs
Cabo (Railroaded)	62% High UV Polyester 38% High UV Polyolefin	2-3/4" H None V	Outdoor Latex with Teflon®	13.0 oz.	125,000 (Cotton Duck)	1500 hours Class 4-4.5	Wet: Class 5 Dry: Class 5	Warp - 90 lbs Fill - 68 lbs
Zanzibar (Railroaded)	61% High UV Polyester 39% High UV Polyolefin	3/16" H 1/8" V	Outdoor Latex with Teflon®	13.4 oz.	125,000 (Cotton Duck)	1500 hours Class 4-4.5	Wet: Class 5 Dry: Class 5	Warp - 110 lbs Fill - 83 lbs

Cleaning Instructions: WS - For water based stains, use mild detergent foam or upholstery shampoo. For oil based stains, spot clean with a dry cleaning solvent, being sure to test area first.

Flame Resistance: California Technical Bulletin 117-2013, NFPA 260.

Fabrics by Absecon Mills, Inc. Fabric performance symbols indicate that a fabric performs to commercial furniture manufacturing standards and passes all applicable testing as specified by the Association for Contract Textiles (ACT).

11/2017 | For additional cards or memo samples:

email samples@dougind.com or call 1-800-950-3684



Absecon Mills is focused on being a responsible corporate entity and we are continually striving to find ways to help preserve our environment, increase energy efficiency and reduce waste. Our mode of manufacturing is specifically designed to prevent damage to the environment. Our products are woven using wind power and many are constructed with polypropylene (a by-product of gasoline manufacturing, utilizing post-industrial waste) and recycled polyester, which helps keep post-consumer waste in the material stream and out of landfills. Absecon offers finishes that use ten times less fluorocarbons than conventional finishes and are SCS Indoor Advantage Gold certified. We participate in a fabric recycling program and work hard to lessen our footprint on the environment. For more information on our green initiatives, please visit www.absecon.com



WOVEN WITH
WIND POWER

Colors may vary slightly from dye lot to dye lot.

*ASTM-D-4034: Seam 12mm from edge using 7 stitches per 25mm (1"), plain lock stitch and a 22 ballpoint needle)

