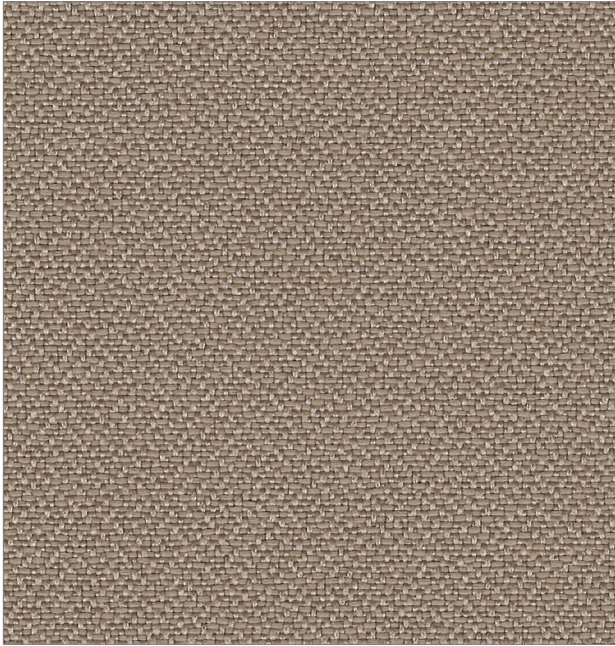


# Del Mar • Icon<sup>®</sup>

UPHOLSTERY FABRIC 10\*  
100% Recycled Polyester



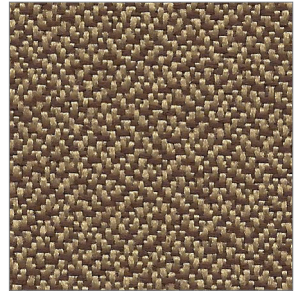
ICON  
SILVER



DEL MAR  
PARCHMENT



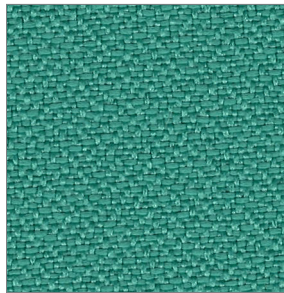
ICON  
BUTTER



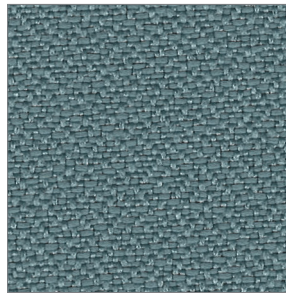
DEL MAR  
NUTMEG



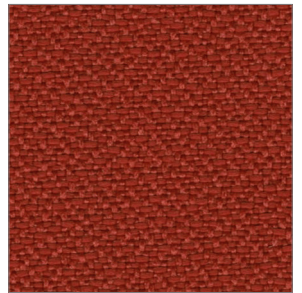
DEL MAR  
SAGE



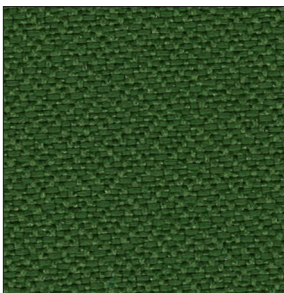
ICON  
TEAL



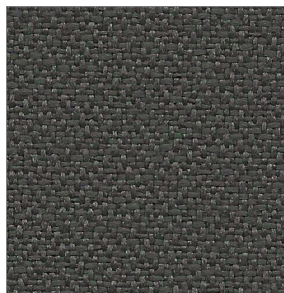
ICON  
DENIM



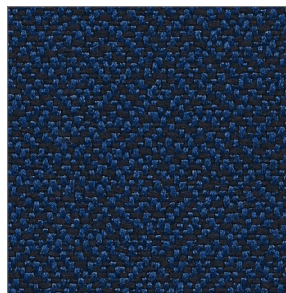
ICON  
TOMATO



ICON  
BASIL



ICON  
GREY



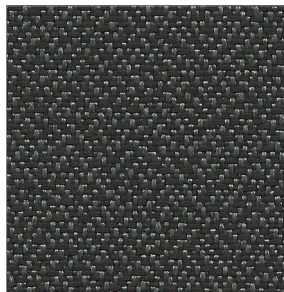
DEL MAR  
MIDNIGHT



DEL MAR  
MARS RED



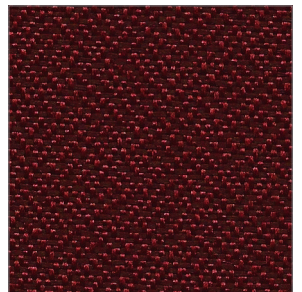
ICON  
BLACK



DEL MAR  
STEEL GREY



ICON  
NAVY



DEL MAR  
RUBY WINE

\* Covered by a 10 year limited performance warranty.



# Del Mar • Icon<sup>®</sup> UPHOLSTERY FABRIC

10\* Pattern is covered by a 10 year limited performance warranty. Contact your sales representative for written warranty terms and conditions.

## TECHNICAL INFORMATION

**Fiber:** 100% Recycled Polyester

**Backing | Finish:** Acrylic with Stain Repellent

**A Abrasion Resistance:** 400,000 double rubs (cotton duck)

**Weight:** 11.5 ounces per linear yard (355 g/m)

**Width:** 54" (137-140 cm)

**Repeat:** None (Pattern is woven up the roll and is suitable for railroading)

**☀ Lightfastness:** 60 Hours, Class 5

**☘ Colorfastness:** Wet - Class 5 | Dry - Class 5

**★ Seam Slippage\*:** Warp - 87 lbs | Fill - 87 lbs.

**Cleaning Instructions:** WS - For water based stains, use mild detergent foam or upholstery shampoo. For oil based stains, spot clean with a dry cleaning solvent being sure to test area first.

**🔥 Flame Resistance:** California Technical Bulletin 117-2013; NFPA 260

Fabric performance symbols indicate that a fabric performs to commercial furniture manufacturing standards and passes all applicable testing as specified by the Association for Contract Textiles (ACT).



02/2024 | For additional cards or memo samples:

email [samples@dougind.com](mailto:samples@dougind.com) or call 1-800-950-3684



Absecon Mills is focused on being a responsible corporate entity and we are continually striving to find ways to help preserve our environment, increase energy efficiency and reduce waste. Our mode of manufacturing is specifically designed to prevent damage to the environment. Our products are woven using wind power and many are constructed with polypropylene (a by-product of gasoline manufacturing, utilizing post-industrial waste) and recycled polyester, which helps keep post-consumer waste in the material stream and out of landfills. Absecon offers finishes that use ten times less fluorocarbons than conventional finishes and are SCS Indoor Advantage Gold certified. We participate in a fabric recycling program and work hard to lessen our footprint on the environment. For more information on our green initiatives, please visit [www.absecon.com](http://www.absecon.com)



Colors may vary slightly from dye lot to dye lot.

\*ASTM-D-4034: Seam 12mm from edge using 7 stitches per 25mm (1"), plain lock stitch and a 22 ballpoint needle

PFAS  
FREE