

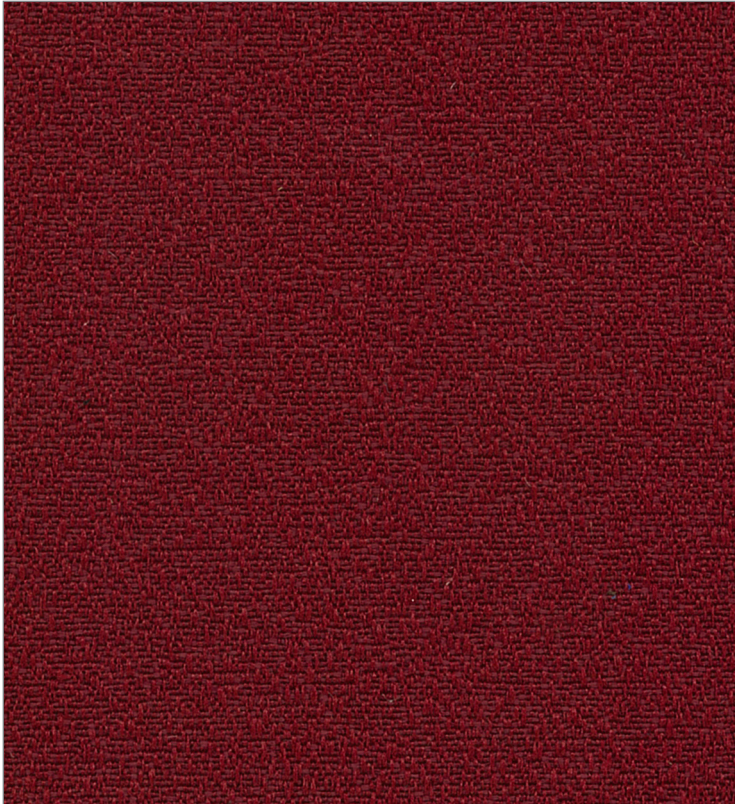
Craze

UPHOLSTERY FABRIC

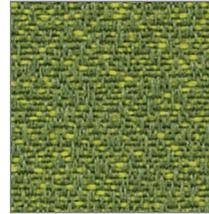
5*

100% Polyester

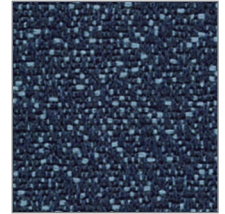
Made with Repreve® Recycled Polyester Yarn



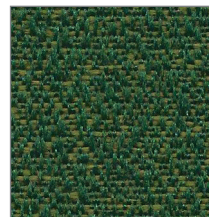
RED ROSE



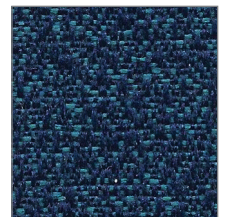
PARROT



COSMIC BLUE



CYPRESS



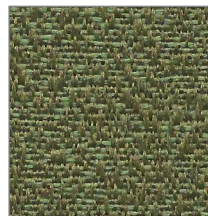
RIVIERA



SAUTERNE



INCA GOLD



WILLOW



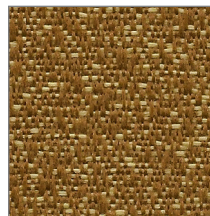
PINE



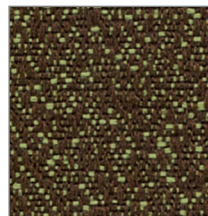
REGAL BLUE



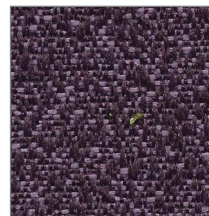
DUNE



CARAMEL



OUTBACK



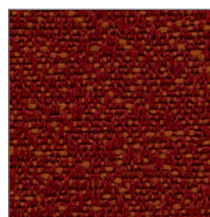
PETUNIA



DARK BLUE



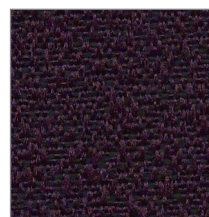
CLOVE



SALSA



BURGUNDY



CONCORD



BLACK

* Covered by a 5 year limited performance warranty.

Craze

UPHOLSTERY FABRIC

5* Pattern is covered by a 5 year limited performance warranty. Contact your sales representative for written warranty terms and conditions.

TECHNICAL INFORMATION

Fiber: 100% Polyester (Made with Repreve® Recycled Polyester Yarn)

Backing | Finish: Acrylic

A Abrasion Resistance: 80,000 double rubs (cotton duck)

Weight: 12.8 ounces per linear yard (396 g/m)

Width: 54" (137-140 cm)

Repeat: None

☼ Lightfastness: 40 Hours, Class 5

☘ Colorfastness: Wet - Class 5 | Dry - Class 4.5

★ Seam Slippage: Warp - 99 lbs | Fill - 99 lbs.

Cleaning Instructions: WS - For water based stains, use mild detergent foam or upholstery shampoo. For oil based stains, spot clean with a dry cleaning solvent being sure to test area first. CLEANING BY A PROFESSIONAL SERVICE IS RECOMMENDED.

🔥 Flame Resistance: California Technical Bulletin 117-2013 Section 1: Cover Fabric Test; CS-191-53, Class 1; BIFMA X5.7-1991; UFAC, Class 1; B. S. 5852 Part 1: 1979 Ignition Source 0, smoldering cigarette.

Fabrics by Absecon Mills, Inc. Fabric performance symbols indicate that a fabric performs to commercial furniture manufacturing standards and passes all applicable testing as specified by the Association for Contract Textiles (ACT).

2/2012 | For additional cards or memo samples:

email samples@dougind.com or call 1-800-950-3684



ACADEMIC



CORPORATE



HEALTHCARE



HOSPITALITY



THEATER



WORSHIP



Absecon Mills is focused on being a responsible corporate entity and we are continually striving to find ways to help preserve our environment, increase energy efficiency and reduce waste. Our mode of manufacturing is specifically designed to prevent damage to the environment. Our products are woven using wind power and many are constructed with polypropylene (a by-product of gasoline manufacturing, utilizing post-industrial waste) and recycled polyester, which helps keep post-consumer waste in the material stream and out of landfills. Absecon offers finishes that use ten times less fluorocarbons than conventional finishes and are SCS Indoor Advantage Gold certified. We participate in a fabric recycling program and work hard to lessen our footprint on the environment. For more information on our green initiatives, please visit www.absecon.com



WOVEN WITH
WIND POWER

Colors may vary slightly from dye lot to dye lot.

*ASTM-D-4034: Seam 12mm from edge using 7 stitches per 25mm (1"), plain lock stitch and a 22 ballpoint needle)

