




# Modena, Maglia & Edgeline

eco*sense*  
BY SPRADLING



**DOUGLASS**  
FABRICS



Welcoming [Modena](#)  
into our Eco-Sence  
family .

Modena has a  
luxurious faux  
leather grain in  
a wide range of  
lavish neutrals  
to rich jewel  
tones. These  
26 beautiful  
saturated colors  
bring a calming  
elegance to any  
design space.

eco<sup>sense</sup>  
BY SPRADLING





## Modena

<b>Content:</b>	100% PVC Vinyl
<b>Repeat:</b>	None
<b>Direction:</b>	Up the Roll
<b>Abrasion:</b>	100,000 Double Rubs
<b>Cold Crack:</b>	-10°F
<b>UV Resistance:</b>	1000 Hours
<b>Finish:</b>	PermaBlok3®
<b>Other Specifications:</b>	No Phthalates, Denim Cleanable, No Biocides, No Heavy Metals
<b>Flame Resistance:</b>	California 117-2013, NFPA 260, UFAC Class 1
<b>Colorways Available:</b>	Auster, Azure, Black, Bluebird, Bohemian, Champagne, Cocoa, Cognac, Cypress, Elephant, Erie, Farro, Fresh, Graphite, Haze, Ink, Mandarin, Medallion, Nutmeg, Pearl, Sanctuary

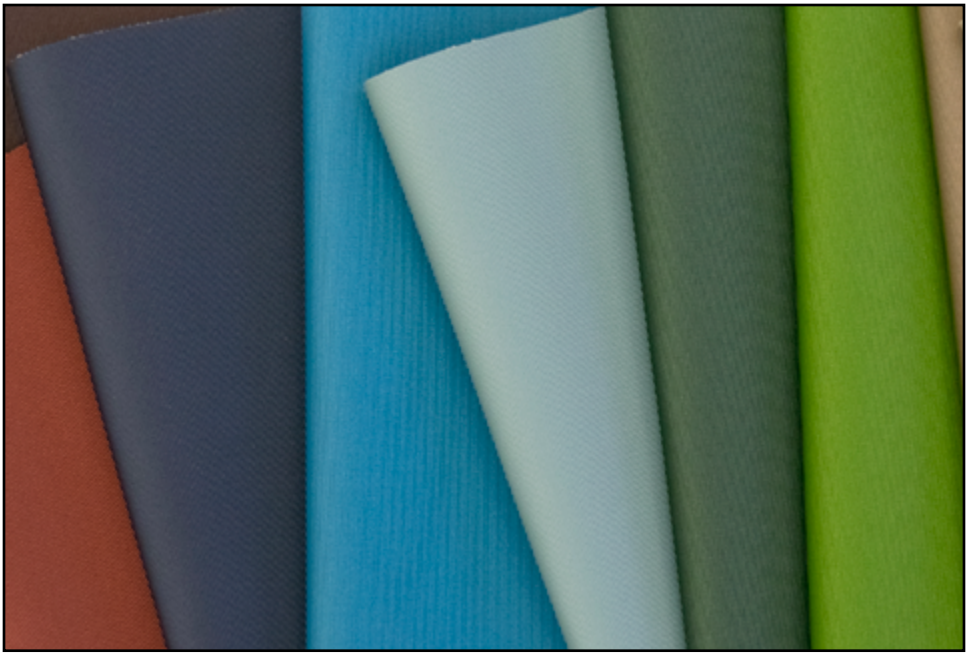


Request Samples

Sleek and modern define the look of [EDGE LINE.](#)

For those spaces with a contemporary aesthetic, these fabric like vinyls can, with 20 vibrant colors to choose from, be used to either warm up or cool down the design of your space.

ecosense<sup>®</sup>  
BY SPRADLING



## Edgeline

<b>Content:</b>	100% PVC Vinyl
<b>Repeat:</b>	None
<b>Direction:</b>	Up the Roll
<b>Abrasion:</b>	100,000 Double Rubs
<b>Cold Crack:</b>	-10°F
<b>Seam Slippage:</b>	1000 Hours
<b>Finish:</b>	PermaBlok3®
<b>Other Specifications:</b>	No Phthalates, Denim Cleanable, No Biocides, No Heavy Metals

**Flame Resistance:** California 117-2013, NFPA 260, UFAC Class 1

**Colorways Available:** Atlantic, Aubergine, Autumn, Caramel, Charcoal, Clover, Crimson, Emerald, Espresso, Full Moon, Graphite, Jasper, Latte, Midnight, Mustard, Olive, Peacock, Pewter, Royal, Ruby, Sangria



Request Samples

# Maglia

For those spaces that are neither too traditional nor too contemporary, [MAGLIA](#)'s 16 color ways, can provide a woven textured look to bridge any designs.



eco<sup>sense</sup>  
BY SPRADLING





## Maglia

<b>Content:</b>	100% PVC Vinyl
<b>Repeat:</b>	None
<b>Direction:</b>	Up the Roll
<b>Abrasion:</b>	100,000 Double Rubs
<b>Cold Crack:</b>	-10°F
<b>UV Resistance:</b>	1000 Hours
<b>Finish:</b>	PermaBlok3®
<b>Other Specifications:</b>	No Phthalates, Denim Cleanable, No Biocides, No Heavy Metals
<b>Flame Resistance:</b>	California 117-2013, NFPA 260, UFAC Class 1
<b>Colorways Available:</b>	Aegean, Alaska, Aqua, Clay, Coral, Desert, Driftwood, Goldenrod, Indigo, Rose, Sage, Sapphire, Sky, Thunder, Truffle, Vanilla, Viridian, Wisteria



Request Samples



## EcoSense® Features & Benefits

*Modena, Edgeline and Maglia*

- No Flame Retardants
- No Biocides
- Formulated Phthalate Free
- Denim Cleanable
- Sulfide Stain Resistant
- Cleanable
- No Heavy Metals
- AB 2998 Compliant
- Prop 65 Compliant
- Environmentally Conscious Manufacturer



**DOUGLASS**  
FABRICS



# PERMABLOK CLEANING GUIDE



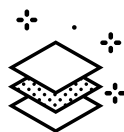
We recommend cleaning at least once a week to extend the lifespan of the upholstery, which will prevent dirt and contamination buildup and permanent staining. In the event of a spill, wipe off any excess right away with a dry white cloth or fabric, but careful not to spread to remaining surface.



Clean the whole surface in a circular motion using liquid hand soap (pH neutral) and water (1 part soap to 9 parts water). Check the Approved Cleaners guide for recommended cleaning products. Wipe with a clean damp cloth to get rid of any excess soap. Repeat as needed and then let dry.



If there is any buildup that cannot be removed with soapy water, a mixture of 1 part isopropyl alcohol to 9 parts water can be used as a last resort. (Remember, using alcohol on a regular basis can affect the properties of the product).



Once a month, you can use a soft-bristle brush for a deeper cleaning. Remember, light colors need more care, more often.

**Note:** The cleaning products recommended were used in a laboratory setting. Spradling Group® has no relationship with the manufacturers of those cleaning products.

## For Color Transfer

Certain clothing and accessory dyes (such as those used on denim jeans) may migrate to lighter colors. This phenomenon is increased by humidity and temperature and is irreversible. Please check compatibility when using this product in combination with painted or varnished surfaces.

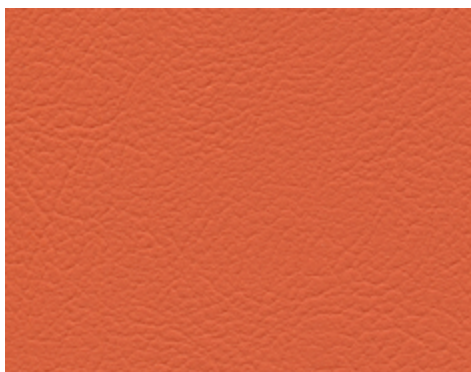
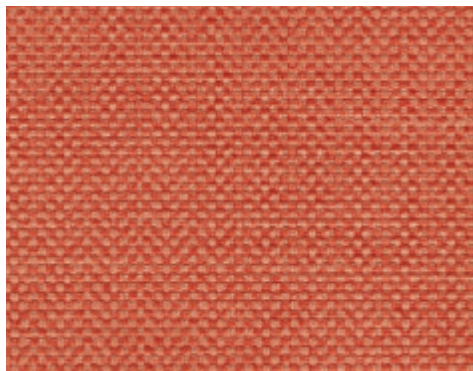
## Disinfectants

In addition to cleaning, healthcare facilities maintain disinfecting regimens to reduce the spread of infections. There is a wide variety of available biocides that include bleaches, peroxides and quaternary ammonium products, among others. They should always be used at the recommended dilution, never in concentrated form. To prolong the life of coated fabrics, the disinfectants should be rinsed off after each use. It should be noted that misuse of disinfectants is the major source of surface deterioration. Spradling International, Inc.® continually evaluates cleaners/disinfectants, and a list of those tested can be found on our website.

***Abrasion test results exceeding ACT Performance Guidelines are not an indicator of product lifespan. Multiple factors affect fabric durability and appearance retention.***

PERMABLOK® is a registered trademark of Spradling Holdings, Inc.

©2021 Spradling International, Inc.®



Douglass knows Fabrics. We design and weave them. Our dedicated and progressive design team is committed to researching and developing a wide variety of product offerings.

Our performance upholstery creations include everything from global trends, intrinsic organics, sumptuous chenilles, striated bouclés, tweeds, solids together with coordinating coated options (vinyls and polyurethanes) for both interior and exterior seating. All of our products go through rigorous testing to assure they meet or exceed ACT standards.



Dedication to our customers is our top priority. The knowledge and experience of our in house staff and sales team is exceedingly deep. Whether you are looking for an in stock item, a price sensitive alternative, a specialty item, or ready to place an order, we are here to provide you with the best solution to fit your specifications.

Douglass Fabrics is a well known supplier to the hospitality, senior living, acute care, education, corporate office, cruise lines, restaurant, theater, spa, casino, institution, marine and government marketplaces.



**DOUGLASS**  
FABRICS

412 Boston Avenue, Egg Harbor City, NJ 08215

[www.douglassfabrics.com](http://www.douglassfabrics.com)

800-950-3684

service@dougind.com