



Carnival Crypton® Collection



The [Carnival Crypton® Collection](#) is a global celebration of life and renewal. Annually, millions gather at festivals around the world to reflect and revel on past major cultural changes which occurred in their region.



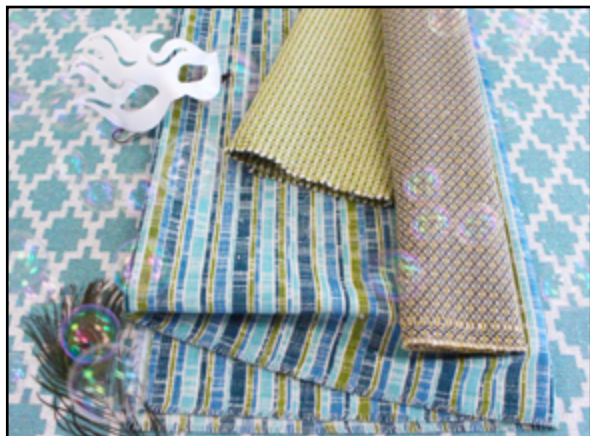
Spirits are lifted high while viewing the elaborately decorated floats in a parade, hearing a happy child squealing on a ride, watching brightly dressed dancers twirling around to familiar music, along with participants that have transformed themselves with unique masks and costumes.



The adventurous patterns and colorways in this group captures that lively energy experienced during these amazing events.



Carnival Collection is made up of 6 patterns in 30



SKUs showcasing 3 various sized geometric patterns, 2 very different takes on a stripe and a small scale multi-colored coordinate that

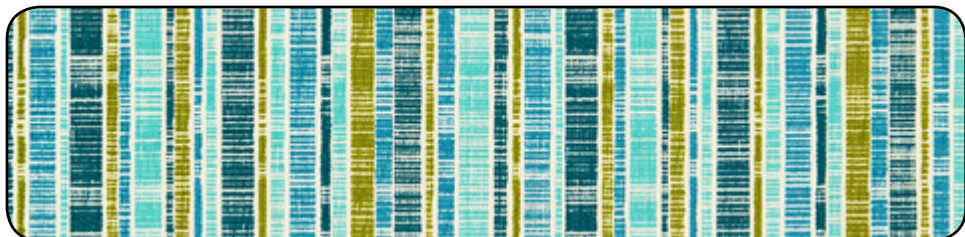
ties back into the pattern work. Colors range from courageous reds, to greens, blues and aquas found in nature including well balanced neutral combinations.



Create your own merriment by requesting memos



for your next project. All Carnival fabrics have been tested, are trusted, and proven to be successfully treated with Crypton's® permanent moisture barrier.





Cavalcade

Content:	100% Polyester
Repeat:	H- 2 1/2 in. V- 4 1/8 in.
Direction:	Up the Roll
Abrasion:	75,000 Double Rubs
Seam Slippage:	Warp: 64 lbs., - Fill 103 lbs.
Finish:	Crypton®
Flame Resistance:	California 117-2013, NFPA 260, UFAC Class 1
Colorways Available:	Arena, Bolero, Meringue, Moreno, Nautica, Tranquil



Request Samples





Fete

Content: 100% Polyester
Repeat: H- 5 in V- 5 5/8 in
Direction: Up the Roll
Abrasion: 75,000 Double Rubs
Seam Slippage: Warp: 93 lbs., - Fill 119 lbs.
Finish: Crypton®
Flame Resistance: California 117-2013, NFPA 260, UFAC Class 1
Colorways Available: Cocktail, Golden, Lily Pond, Stallion



Request Samples





Funfair

Content:	47% Polyester, 1% Nylon 47% Post Consumer Recycled Polyester 5% Post Industrial Recycled Polyester
Repeat:	H- 1 1/4 in. V- 7/8 in.
Direction:	Up the Roll
Abrasion:	78,000 Double Rubs
Seam Slippage:	Warp: 57 lbs., - Fill 79 lbs.
Finish:	Crypton®
Flame Resistance:	California 117-2013, NFPA 260, UFAC Class 1
Colorways Available:	Aqua, Garden Party, Parchment, Sunset



Request Samples





Hijinks

Content:	67% Polyester 33% Post Consumer Recycled Polyester
Repeat:	H- 8 5/16 in. V- 7 3/8 in.
Direction:	Railroaded
Abrasion:	75,000 Double Rubs
Seam Slippage:	Warp: 122 lbs., - Fill 120 lbs.
Finish:	Crypton®
Flame Resistance:	California 117-2013, NFPA 260, UFAC Class 1
Colorways Available:	Amazon, Cacao, Cove, Samba



Request Samples





Merry

Content:	94% Polyester 4% Post Industrial Recycled Polyester 2% Post Consumer Recycled Polyester
Repeat:	H- 5/8 in. V- 1/2 in.
Direction:	Up the Roll
Abrasion:	75,000 Double Rubs
Seam Slippage:	Warp: 50 lbs., - Fill 84 lbs.
Finish:	Crypton®
Flame Resistance:	California 117-2013, NFPA 260, UFAC Class 1
Colorways Available:	Limon, Relax, Rumba, Sombrero



Request Samples



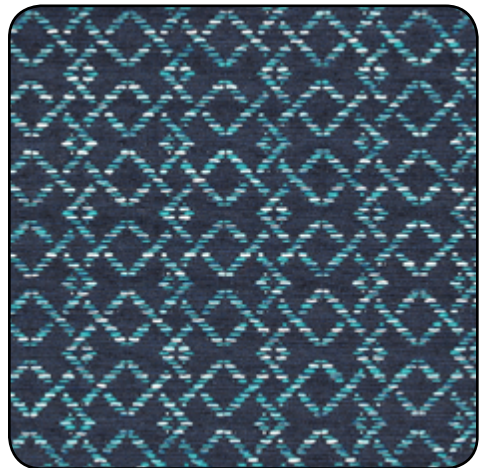
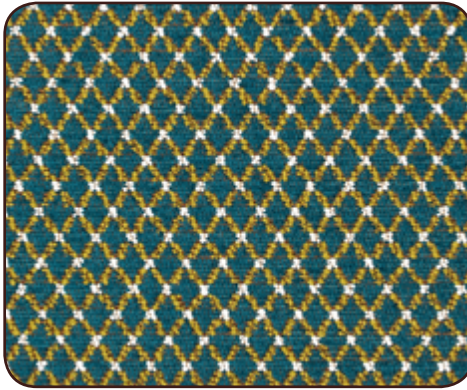
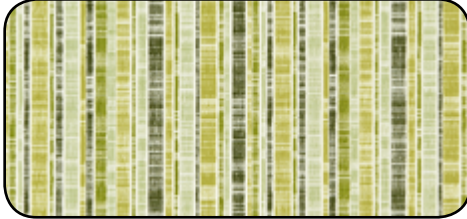
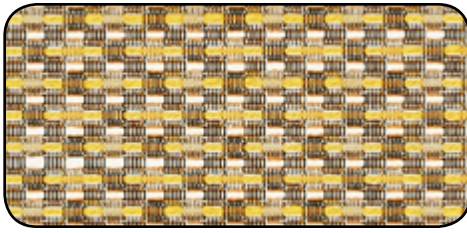


Sprite

Content:	58% Olefin 42% Polyester
Repeat:	H- 1/2 in. V- 11/16 in.
Direction:	Up the Roll
Abrasion:	75,000 Double Rubs
Seam Slippage:	Warp: 122 lbs., - Fill 112 lbs.
Finish:	Crypton®
Flame Resistance:	California 117-2013, NFPA 260, UFAC Class 1
Colorways Available:	Aura, Cream, Mediterranean, Mystic, Playa, Suede, Peppermint, Sierra, Scarlet



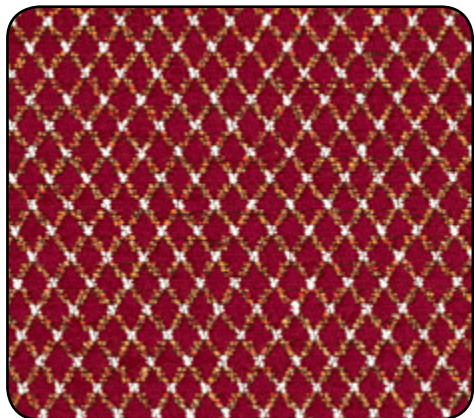
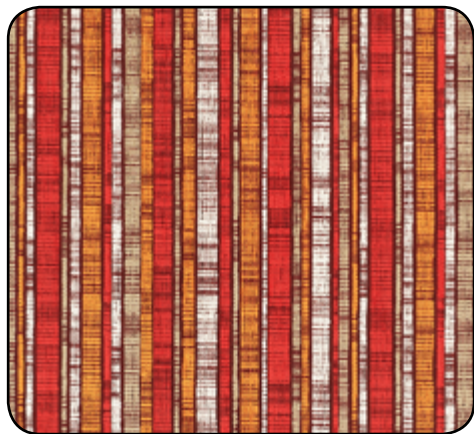
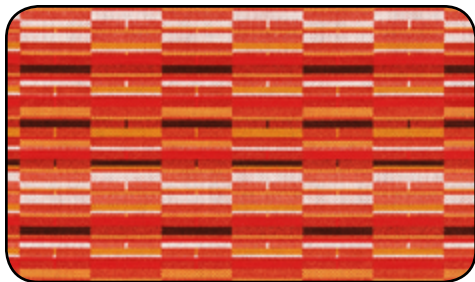
Request Samples



A branded permanent moisture barrier for woven fabrics

- Crypton® treated fabrics are considered a hard surface by the EPA
- Can be disinfected with Crypton's® Disinfectant and Deodorizer
- Passes a minimum of 50,000 double rubs on the Wyzenbeek test
- Meets California's AB 2998 (contains no flame retardant additives)
- Uses Silver Ion technology to combat bacterial and fungal growth
- Resists odors and mildew
- Is UL GREENGUARD Gold Certified
- Easy to clean and maintain





Cleaning Instructions:

While Crypton® is the easiest fabric in the world to clean, it is not self cleaning. In reality, most new stains can be removed with a damp cloth and water. There is one suggested cleaning method that is universally and easily available—the use of enzyme detergent (listed below) and water.

For Spot cleaning:

Mix five parts water with one part enzyme laundry detergent (e.g., Tide® or Cheer®) to form a mixture that works well on most stains. Follow these simple steps:

Remove excess soil and apply the soap mixture to the stained areas.

Allow the solution to remain on the stain for one minute.

Blot stain with a dry, white towel, rinse any remaining soap and blot area again.

Repeat if necessary.

Any cleaning product left on the fabric may attract soil.

Every facility has preferred cleaners and cleaning practices. If there is a special cleaning agent you plan to use with Crypton®, or for more information, contact info@cryptoncare.com.



Douglass knows Fabrics. We design and weave them. Our dedicated and progressive design team is committed to researching and developing a wide variety of product offerings.

Our performance upholstery creations include everything from global trends, intrinsic organics, sumptuous chenilles, striated bouclés, tweeds, solids together with coordinating coated options (vinyl's and polyurethanes) for both interior and exterior seating. All of our products go through rigorous testing to assure they meet or exceed ACT standards.



Dedication to our customers is our top priority. The knowledge and experience of our in house staff and sales team is exceedingly deep. Whether you are looking for an in stock item, a price sensitive alternative, a specialty item, or ready to place an order, we are here to provide you with the best solution to fit your specifications.

Douglass Fabrics is a well known supplier to the hospitality, senior living, acute care, education, corporate office, cruise lines, restaurant, theater, spa, casino, institution, marine and government marketplaces.



DOUGLASS
F A B R I C S

412 Boston Avenue, Egg Harbor City, NJ 08215

www.douglassfabrics.com

800-950-3684

service@dougind.com