



Carnival II

Crypton® Collection





The Carnival II Crypton® Collection is a global celebration of life and renewal. Annually, millions gather at festivals around the world to reflect and revel on past major cultural changes which occurred in their region.



Spirits are lifted high while viewing the elaborately decorated floats in a parade, hearing a happy child squealing on a ride, watching brightly dressed dancers twirling around to familiar music, along with participants that have transformed themselves with unique masks and costumes.



The adventurous patterns and colorways in this group captures that lively energy experienced during these amazing events.



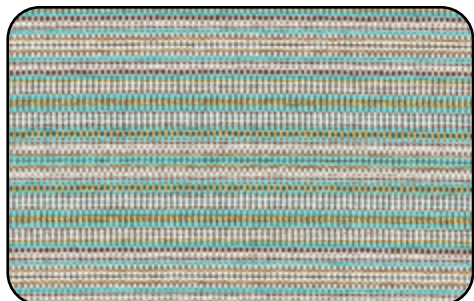
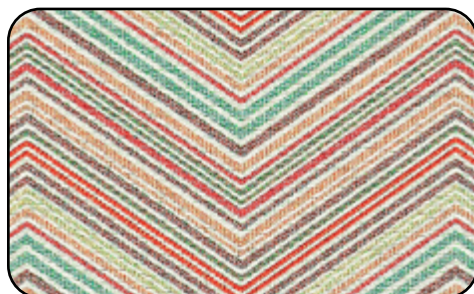
Carnival Collection II brings even more excitement to the global celebration theme! Make that bold statement by selecting Banter, a midscale chevron or coordinate and cozy up to Romps soft chenille hand.



Looking for that unique stripe? Check out Cavorts detailed top stitch look, Rio with an added geometric element or Parade's multi colored mini stacked appearance with each pattern having its own style. Rounding out the collection is Fiesta, a quartered geometric element that gets flipped around and mirrored throughout the fabric.

Create your own merriment by requesting memos for your next project. All Carnival fabrics have been tested, are trusted, and proven to be successfully treated with Crypton's® permanent moisture barrier.







Banter

Content:	44% Polyester 42% Post Consumer Recycled Polyester 14% Post Industrial Recycled Polyester
Repeat:	H- 7 1/2 in. V- 4 1/2 in.
Direction:	Up the Roll
Abrasion:	78,000 Double Rubs
Seam Slippage:	Warp: 102 lbs., - Fill 115 lbs.
Finish:	Crypton®
Flame Resistance:	California 117-2013, NFPA 260, UFAC Class 1
Colorways Available:	Fiery, Jet Set, Salsa



Request Samples





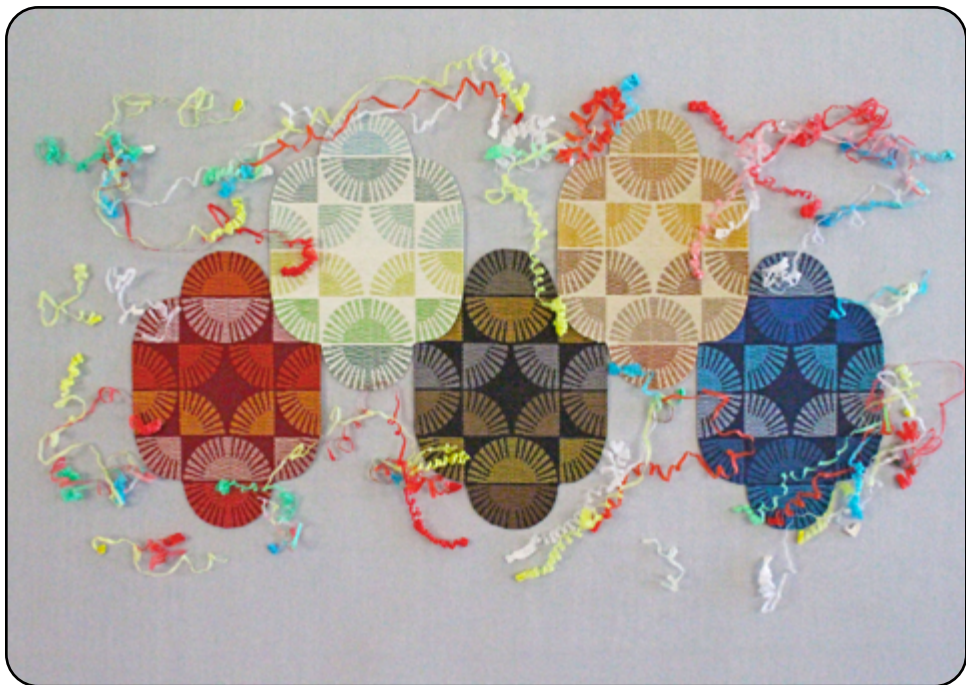
Cavort

Content:	68% Polyester 32% Post Consumer Recycled Polyester
Repeat:	H- 5 3/4 in. V- 1/2 in.
Direction:	Railroaded
Abrasion:	78,000 Double Rubs
Seam Slippage:	Warp: 81 lbs., - Fill 118 lbs.
Finish:	Crypton®
Flame Resistance:	California 117-2013, NFPA 260, UFAC Class 1
Colorways Available:	Dream, Ocean, Paso, Spice



Request Samples





Fiesta

Content:	78% Polyester 22% Post Consumer Recycled Polyester
Repeat:	H- 7 7/16 in. V- 7 3/16 in.
Direction:	Up the Roll
Abrasion:	63,000 Double Rubs
Seam Slippage:	Warp: 80 lbs., - Fill 113 lbs.
Finish:	Crypton®
Flame Resistance:	California 117-2013, NFPA 260, UFAC Class 1
Colorways Available:	Antic, Indigo, Punch, Rockport, Serene



Request Samples





Parade

Content:	57% Polyester 25% Olefin 18% Post Consumer Recycled Polyester
Repeat:	H- 3/16 in. V- 6 7/8 in.
Direction:	Up the Roll
Abrasion:	75,000 Double Rubs
Seam Slippage:	Warp: 71 lbs., - Fill 106 lbs.
Finish:	Crypton®
Flame Resistance:	California 117-2013, NFPA 260, UFAC Class 1
Colorways Available:	Cabaret, Cha-Cha, Chili, Libra, Resort, Rodeo, Tequila



Request Samples





Rio

Content:	100% Polyester
Repeat:	H- 1 1/4 in. V- 5 in.
Direction:	Up the Roll
Abrasion:	75,000 Double Rubs
Seam Slippage:	Warp: 65 lbs., - Fill 109 lbs.
Finish:	Crypton®
Flame Resistance:	California 117-2013, NFPA 260, UFAC Class 1
Colorways Available:	Anchorage, Aztec, Jamboree, Lounge, Truffle



Request Samples





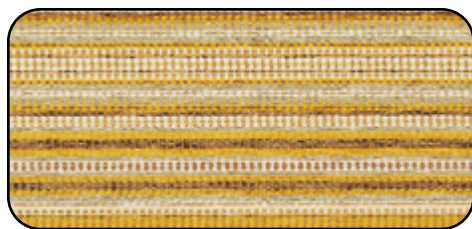
Romp

Content:	88% Polyester 8% Post Industrial Recycled Polyester 4% Post Consumer Recycled Polyester
Repeat:	H- 3 3/4 in. V- 2 11/16 in.
Direction:	Up the Roll
Abrasion:	78,000 Double Rubs
Seam Slippage:	Warp: 108 lbs., - Fill 107 lbs.
Finish:	Crypton®
Flame Resistance:	California 117-2013, NFPA 260, UFAC Class 1
Colorways Available:	Cream, Aura, Mediterranean, Mystic, Suede, Playa



Request Samples





A branded permanent moisture barrier for woven fabrics

- Crypton® treated fabrics are considered a hard surface by the EPA
- Can be disinfected with Crypton's® Disinfectant and Deodorizer
- Passes a minimum of 50,000 double rubs on the Wyzenbeek test
- Meets California's AB 2998 (contains no flame retardant additives)
- Uses Silver Ion technology to combat bacterial and fungal growth
- Resists odors and mildew
- Is UL GREENGUARD Gold Certified
- Easy to clean and maintain





Cleaning Instructions:

While Crypton® is the easiest fabric in the world to clean, it is not self cleaning. In reality, most new stains can be removed with a damp cloth and water. There is one suggested cleaning method that is universally and easily available—the use of enzyme detergent (listed below) and water.

For Spot cleaning:

Mix five parts water with one part enzyme laundry detergent (e.g., Tide® or Cheer®) to form a mixture that works well on most stains. Follow these simple steps:

Remove excess soil and apply the soap mixture to the stained areas.

Allow the solution to remain on the stain for one minute.

Blot stain with a dry, white towel, rinse any remaining soap and blot area again.

Repeat if necessary.

Any cleaning product left on the fabric may attract soil.

Every facility has preferred cleaners and cleaning practices. If there is a special cleaning agent you plan to use with Crypton®, or for more information, contact info@cryptoncare.com.

Carnival Collection I is made up of 6 patterns in 30 SKU's showcasing 3 various sized geometric patterns, 2 very different takes on a stripe and a small scale multi-colored coordinate that ties back in to the pattern work. Review the Carnival I collection to see how they mix together.



Douglass knows Fabrics. We design and weave them. Our dedicated and progressive design team is committed to researching and developing a wide variety of product offerings.

Our performance upholstery creations include everything from global trends, intrinsic organics, sumptuous chenilles, striated bouclés, tweeds, solids together with coordinating coated options (vinyl's and polyurethanes) for both interior and exterior seating. All of our products go through rigorous testing to assure they meet or exceed ACT standards.



Dedication to our customers is our top priority. The knowledge and experience of our in house staff and sales team is exceedingly deep. Whether you are looking for an in stock item, a price sensitive alternative, a specialty item, or ready to place an order, we are here to provide you with the best solution to fit your specifications.

Douglass Fabrics is a well known supplier to the hospitality, senior living, acute care, education, corporate office, cruise lines, restaurant, theater, spa, casino, institution, marine and government marketplaces.



DOUGLASS
F A B R I C S

412 Boston Avenue, Egg Harbor City, NJ 08215

www.douglassfabrics.com

800-950-3684

service@dougind.com